



*SESSION: Green infrastructure strategies for community resilience:
planning, maintenance & workforce development*

VACANT to **VIBRANT**

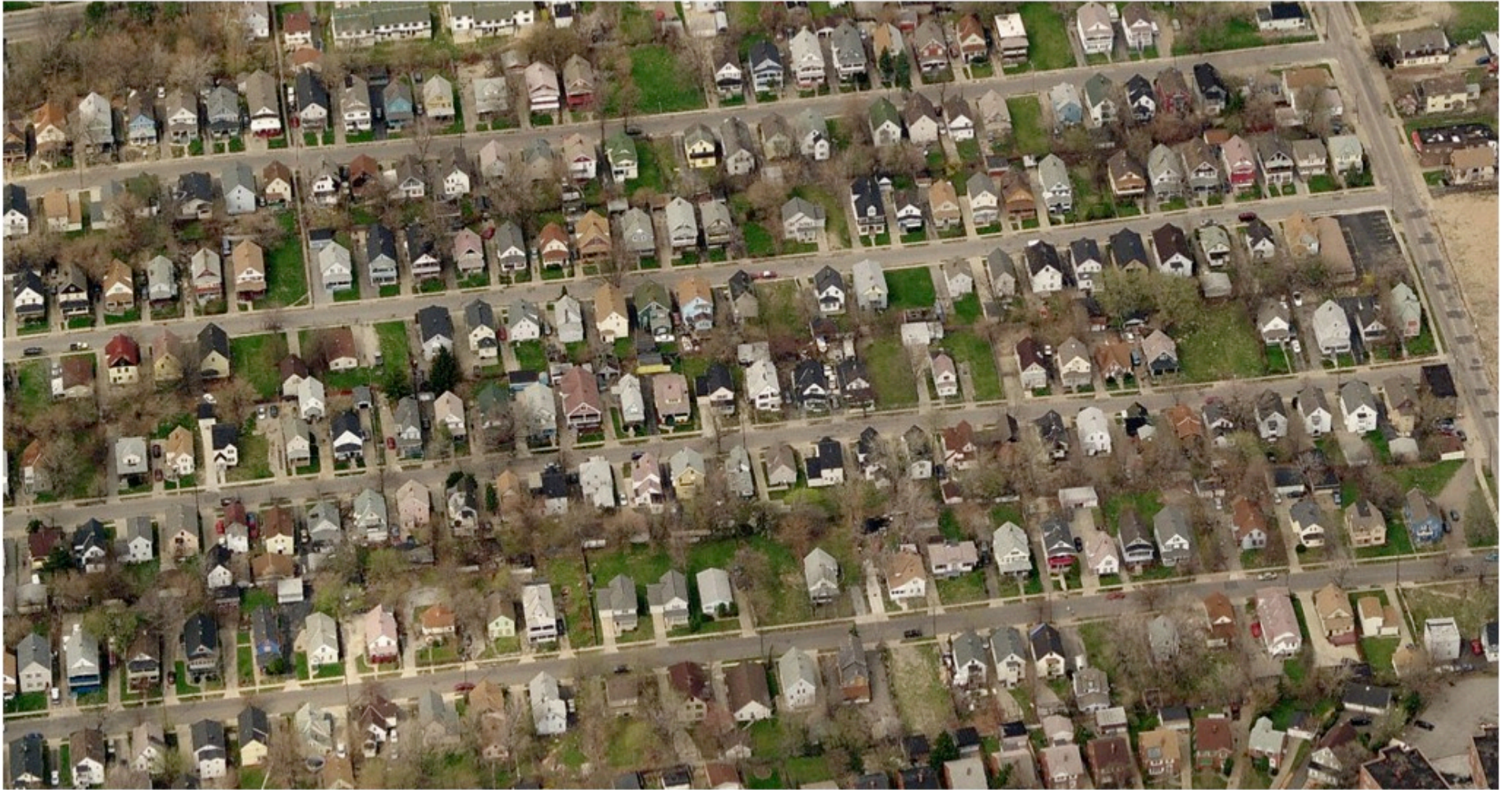
stormwater management & neighborhood stabilization
on vacant urban land

Sandra Albro, Research Associate, Applied Urban Ecology





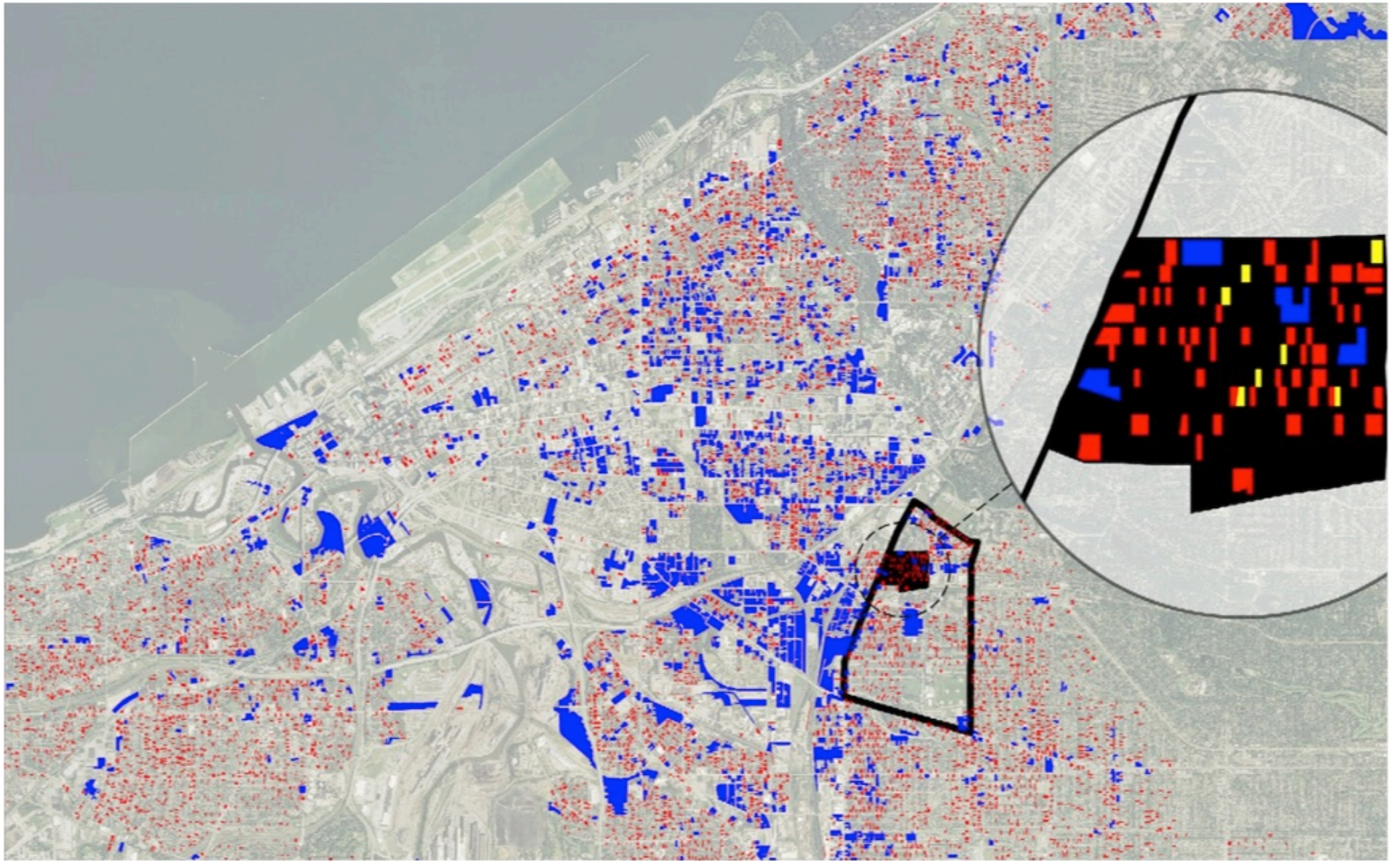
Cleveland, OH



Cleveland, OH



Cleveland, OH



*Cleveland, OH
<0.5 acre; <3 parcels*



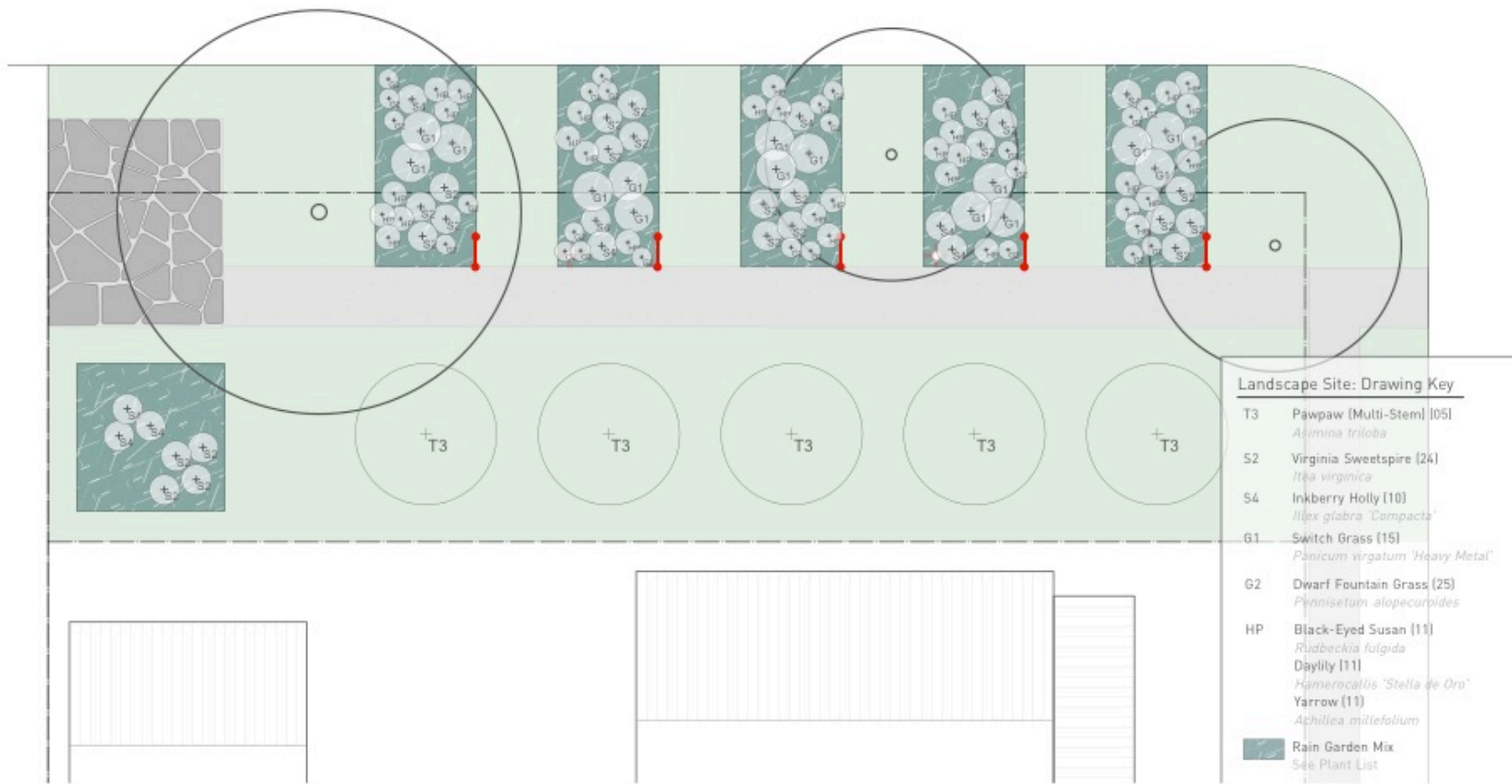
Cleveland, OH



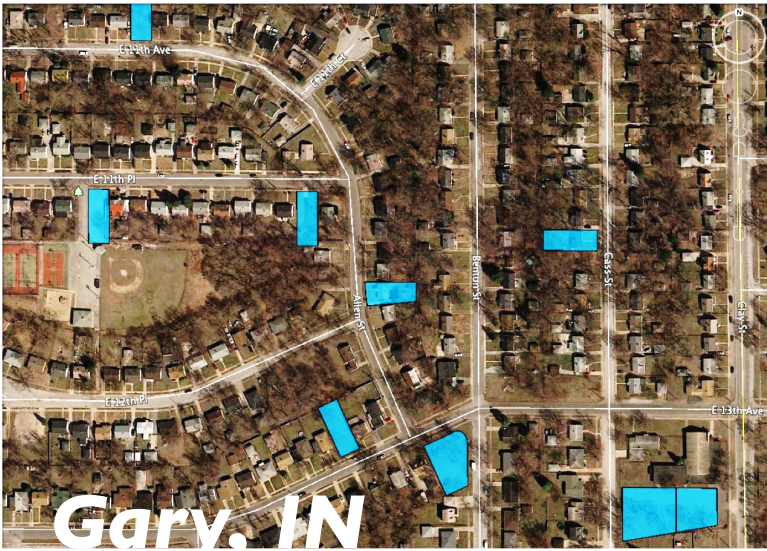
Gary, IN



Buffalo, NY



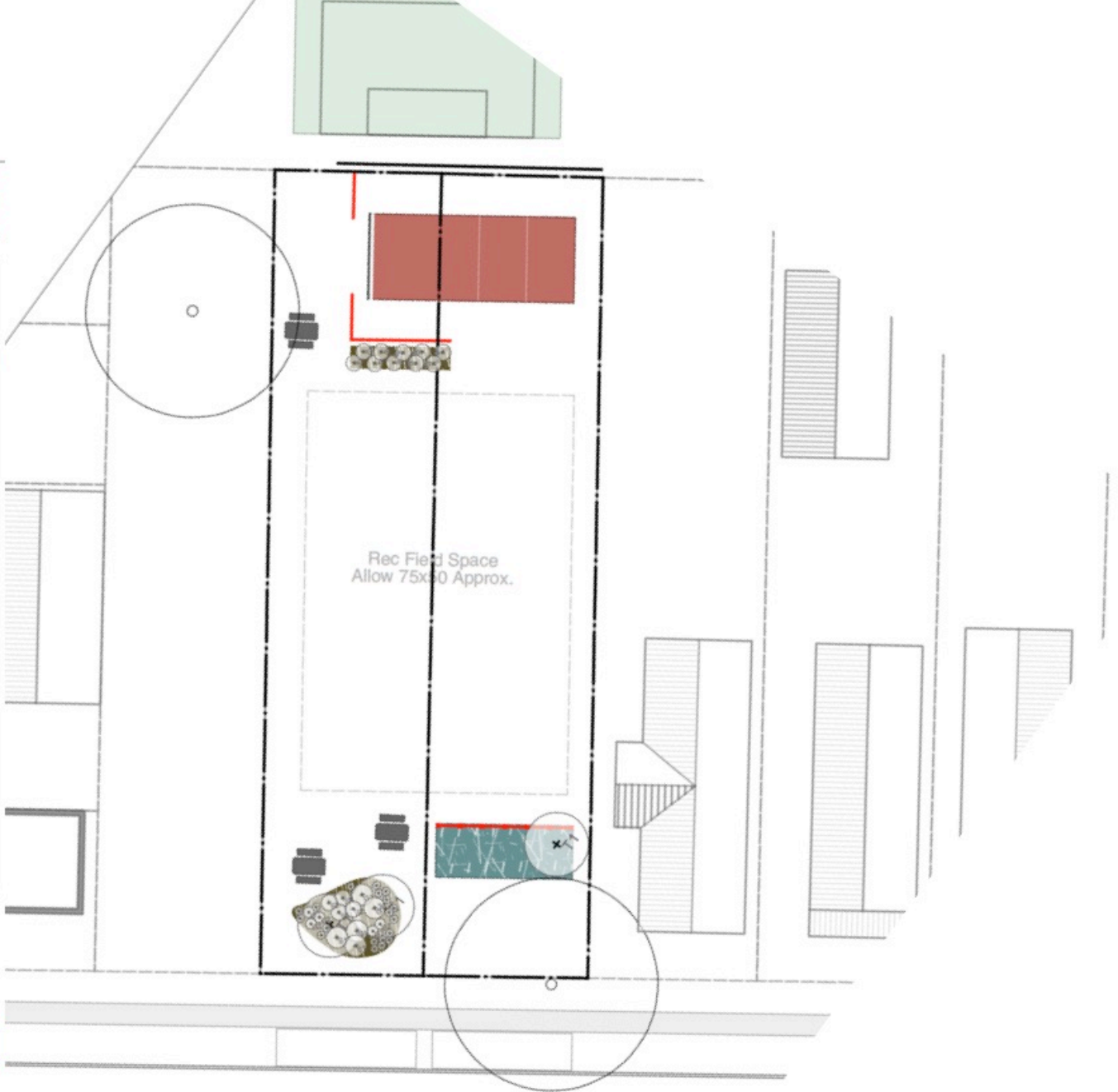
Gary, IN



Vacant to Vibrant: 2013-2017

LOWER MAINTENANCE

- Planting: Trees/Shrubs/Grasses**
- T1 Honey Locust (7)
Gleditsia triacanthos
 - G1 Heavy Metal Blue Switch Grass (12)
Panicum virgatum 'Heavy Metal'
 - G2 Dwarf Fountain Grass (5)
Pennisetum alopecuroides 'Hameln'
 - S1 Red-Osier Dogwood (03)
Cornus stolonifera
 - S2 Virginia Sweetspire (4)
Itea virginica
- Scale: 1" = 20'-0"
-



L
03

Lawrence Place
Planting Plan



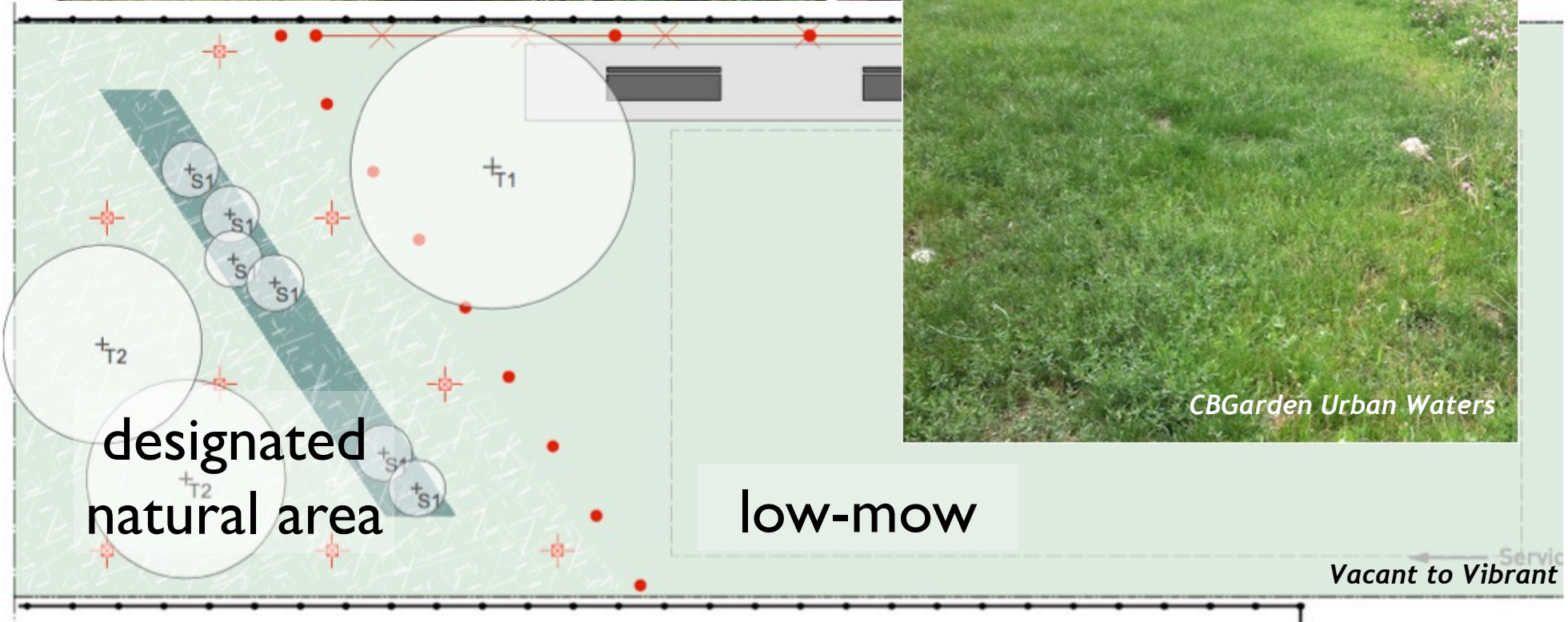
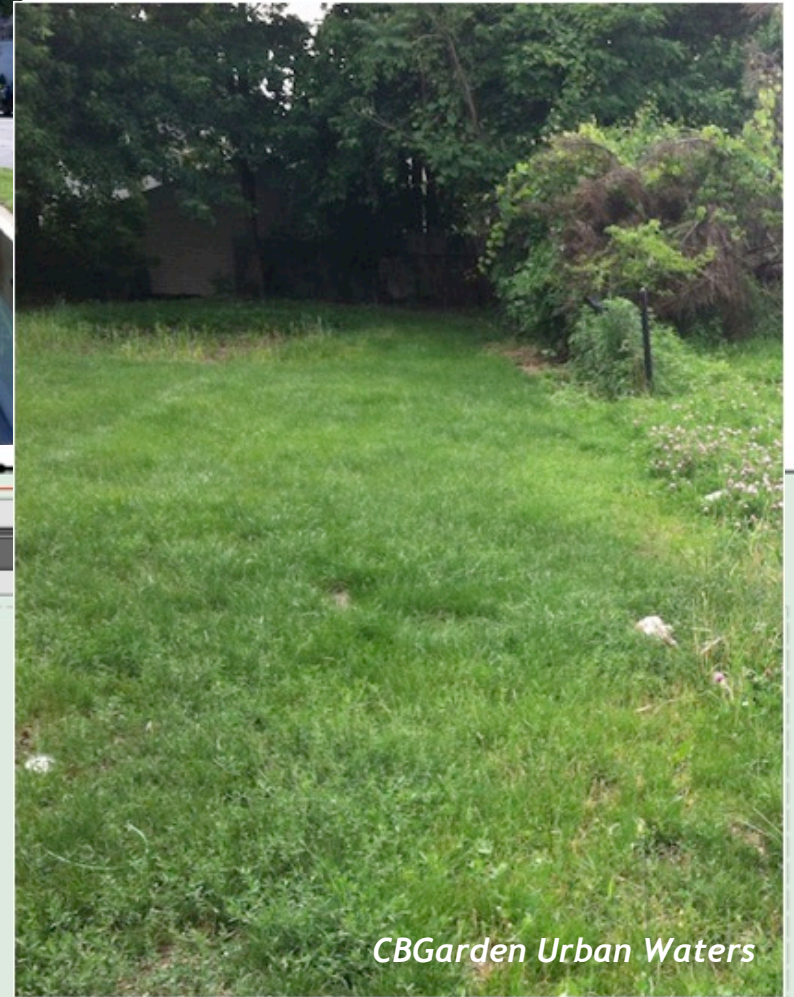
IMPLEMENT
DESIGN / GRAPHICS / LANDSCAPE

Lawrence Place



fewer species

Quarterly maintenance, monthly mowing



Monthly mowing, (bi)annual clean-up



fewer species

less mulch

perennials

low-mow

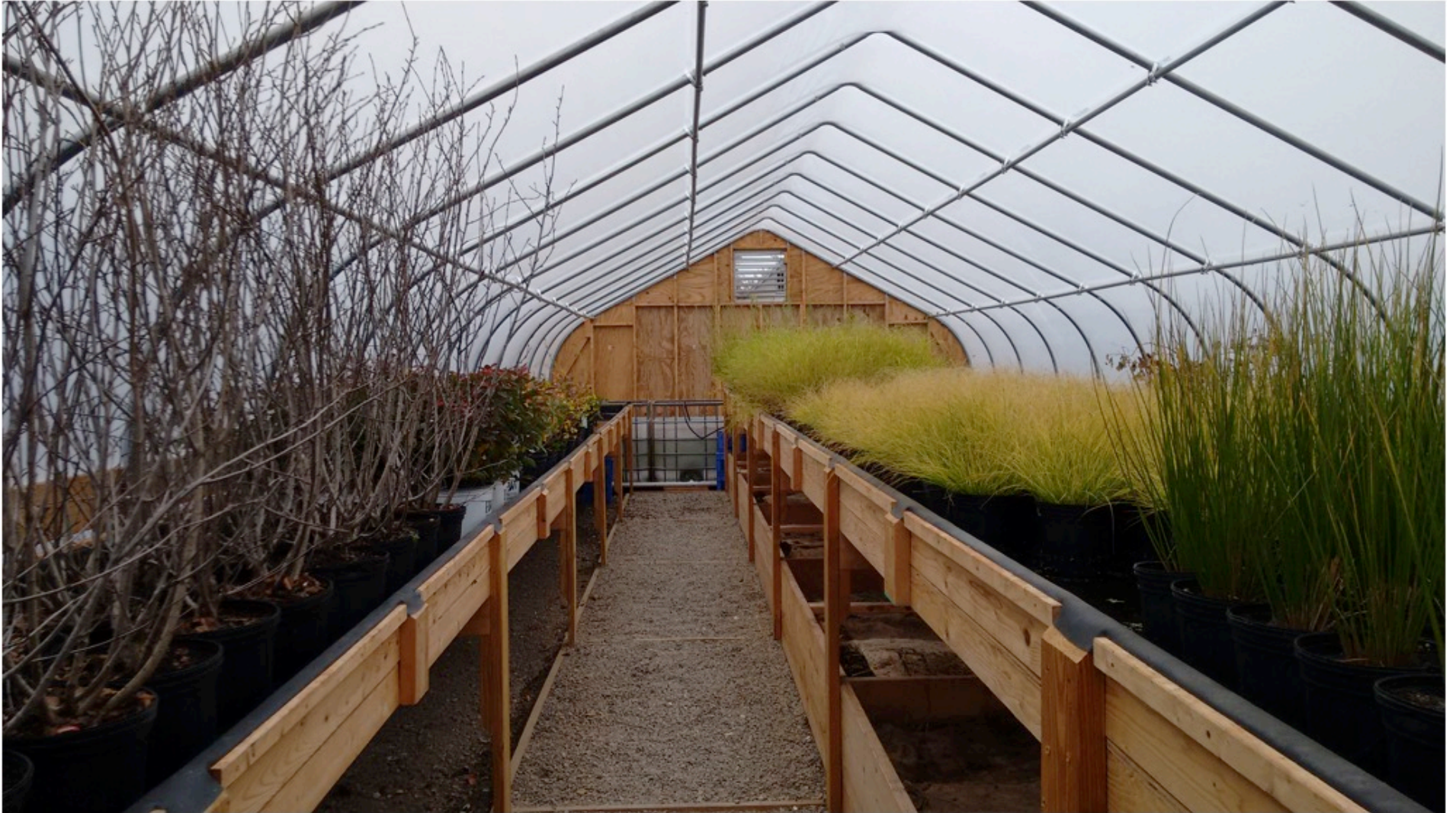
natives

Quarterly maintenance, monthly mowing

LOWER MAINTENANCE

- Design and build to maintenance capacity & constraints
- Simplify design as much as possible
- Involve maintenance contractor in design process

WORKFORCE DEVELOPMENT



V2V plant nursery, PUSH Buffalo



V2V plant nursery, Cleveland Botanical Garden Green Corps



V2V plant nursery, City of Gary Urban Conservation Team

WORKFORCE DEVELOPMENT

- Certification & specialized training:
 - Native/low-maintenance landscaping
 - Stormwater engineering
 - Plant/soil production
- Require community-based procurement/training

COMMUNICATE SUSTAINABILITY



Triple bottom line



<\$0.75 / gallon CSO



\$2.00-\$4.00 / gallon CSO

Northeast Ohio Regional Sewer District

COMMUNICATE SUSTAINABILITY

- Emphasize economic bottom line
- Ensure economic sustainability
- Close loops



cbgarden.org/v2v

Sandra Albro
Research Associate, Applied Urban Ecology

salbro@cbgarden.org
(216) 707-2860

Image NOAA

Google earth

Imagery Date: 5/18/2012 41°29'40.33" N 81°39'11.16" W elev 662 ft eye alt 31.87 mi